

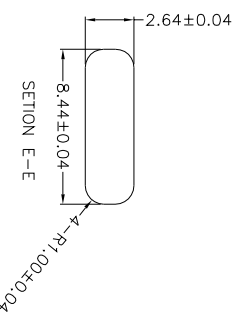
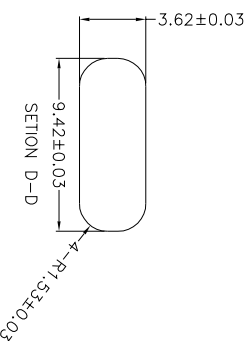
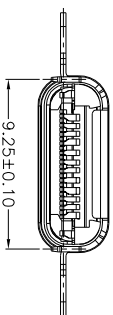
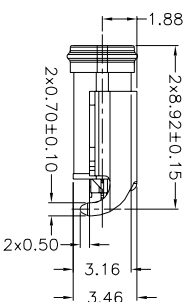
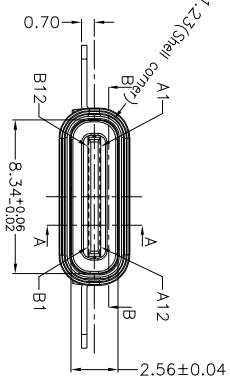
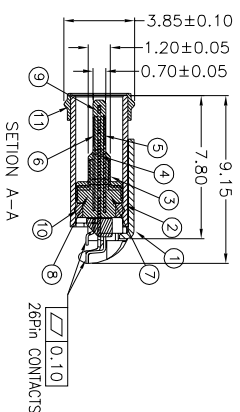
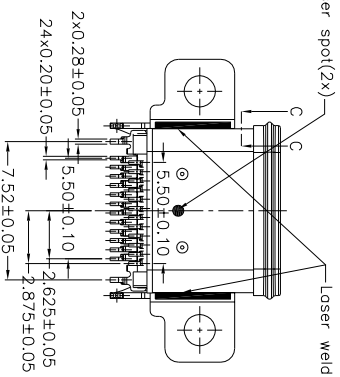
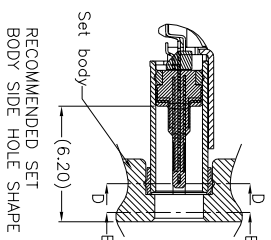
RECOMMENDED PCB LAYOUT  
DEFAULT TOLERANCE:±0.05

Remark:  
1-MECHANICAL PERFORMANCE:  
1-1 INSERTION FORCE: 5~20N.  
1-2 EXTRACTION FORCE: 8~20N INITIAL,6~20N AFTER TEST;  
1-3 HOLDING FORCE: 10~20N.  
2-ELECTRICAL PERFORMANCE:  
2-1. VOLTAGE RATING:55A MIN FOR VBUS,0.25A MIN FOR OTHERS  
2-2. I.CCR:  
2-3.INSULATION RESISTANCE: 100MΩ MIN.  
2-4. DIELECTRIC WITHSTAND VOLTAGE:AC 100V FOR 1 MINUTE.  
3-The waterproof grade is IPX&lt;1.5m depth of water).

PIN DEFINITION:

A1	A2	A3	A4	A5	A6	A7	A8	A9	A10	A11	A12
GND	TX1+	TX1-	VBUS	CC1	D+	D-	SBU1	VBUS	FX2-	FX2+	GND
GND	RX1+	RX1-	VBUS	SBU2	D-	D+	CC2	VBUS	TX2-	TX2+	GND
B12	B11	B10	B9	B8	B7	B6	B5	B4	B3	B2	B1

Item	Title	Material	Dispose
1	Frame	Stainless Steel, T=0.30	Ni40u" Min.
2	Shell	Stainless Steel, T=0.30	Ni40u" Min.
3	GND Plate	Stainless Steel, T=0.10	None
4	Mid Plate	Stainless Steel, T=0.15	Ni 40u"Min.+Solder mask 1u"Min.
5	Top Contact	Copper Alloy, T=0.12	Welding Fez: Ni 80u"4u" 15u" Min. Solder Color: Ni 80u"4u" 1u" Min.
6	Bottom Contact	Copper Alloy, T=0.12	
7	Housing A	High Temperature Plastic	UL 94V-0/Black
8	Housing B	High Temperature Plastic	UL 94V-0/Black
9	Housing C	High Temperature Plastic	UL 94V-0/Black
10	Rubber(O-ring)	SI	White or Grey
11	Rubber	SI	Black



**CSCONN**

UNITS: mm  
GENERAL TOLERANCES  
K. ±5°  
K.I ±2°  
XX ±1°  
PART NO. (ATTENDED USE)  
CUS31248916010

**CSCONN PRECISE ELECTRONICS CO.,LTD**

TITLE: USB TYPE C FEMALE 24P SMT防水带孔

DWG NO. USB

APPD:	SKilla	SCALE	SHEET	REV
CHKD:	Kitty	1 OF 1	A	

