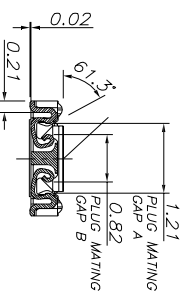
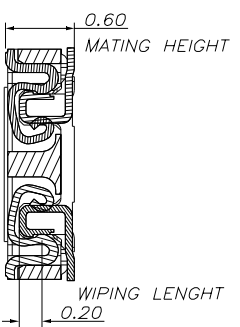
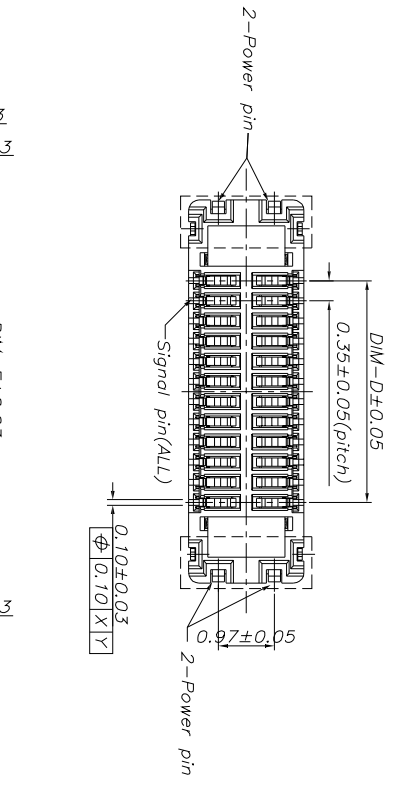


SECTION B-B
SCALE 1:1

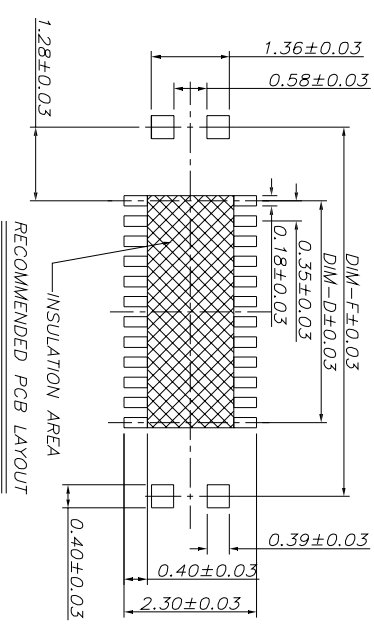


SECTION A-A
SCALE 1:1



MATING SECTION
SCALE 2:1

NUMBER OF CONTACTS	DIM-A	DIM-B	DIM-C	DIM-D	DIM-E	DIM-F
6	3.50	2.42	1.60	0.7	2.50	3.26
10	4.20	3.12	2.30	1.40	3.20	3.96
16	5.25	4.17	3.35	2.45	4.25	5.01
24	6.65	5.57	4.75	3.85	5.65	6.41
30	7.70	6.62	5.80	4.90	6.70	7.46
40	9.45	8.37	7.55	6.65	8.45	9.21



- NOTES:
 1. HOUSING MATERIAL: LCP U94V_0 BLACK.
 2. TERMINAL AND POST MATERIAL: COPPER ALLOY, GOLD PLATING OVER NICKEL.
- SPECIFICATIONS:
 1. ELECTRICAL CHARACTERISTICS:
 1-1. RATING CURRENT: POWER PIN 3A/CONTACT, SIGNAL PIN 0.3A/CONTACT(MAX.5A AT TOTAL CONTACT).
 1-2. VOLTAGE RATING: 50V
 1-3. CONTACT RESISTANCE: POWER PIN 20mΩ MAX,SIGNAL PIN 50mΩ MAX.
 1-4. DIELECTRIC WITHSTANDING VOLTAGE: 250V AC FOR ONE MINUTE.
 1-5. INSULATION RESISTANCE: 1000MΩ MIN.
 2. MECHANICAL CHARACTERISTICS:
 2-1. INSERTION FORCE: 1.5N/PIN MAX(40N MAX TOTAL)
 2-2. WITHDRAWAL FORCE: 0.15N/PIN MIN
 3. DURABILITY: 30 CYCLES(MIN).
 4. AMBIENT TEMPERATURE RANGE:-55°C~+85°C

UNITS: mm
CSCONN
 CSCONN PRECISE ELECTRONICS CO.,LTD

GENERAL TOLERANCE
 X.° ±5° 0.X±0.25
 X.1±2° 0.XX±0.2
 XX.±1° 0.XXX±0.1

PART NO.(INTENDED USE)
 CBT-3510XXF-06

TITLE:
 BTB 0.35MM XP FEMALE H=0.6MM

APPD:
 CHKD: Skilla

DWG.NO. BTB

DR: Kitty

SCALE SHEET REV
 1:1 1 OF 1 A