

Specifications

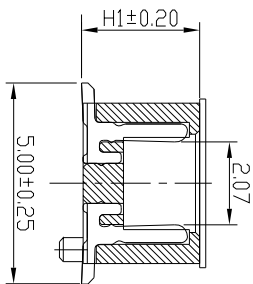
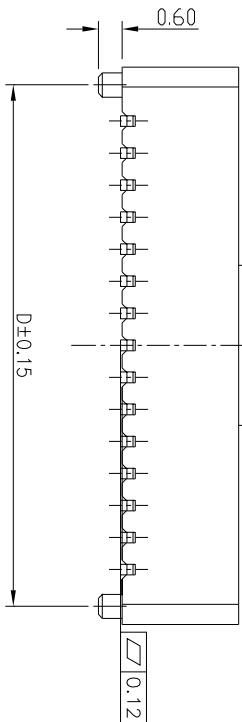
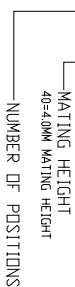
Current Rating: 0.5Amp
 Insulation Resistance: 1000MΩ Min.
 Dielectric Withstanding: 300V AC
 Contact Resistance: 20mΩ Max.
 Operating Temperature: -40°C to +105°C

Materials

Contact Material: Phosphor Bronze
 Insulation Material: High Temperature Thermoplastic, UL 94V-0 (Nylon 9T) or the equivalent material

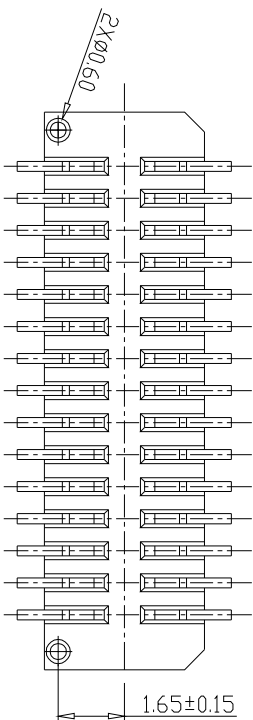
PART NO. DESCRIPTION:

CBT-0810XXF-XX



MATING HEIGHT	H1
4.00	2.90
4.50	2.90
5.00	2.90
5.50	3.40
6.00	3.40
6.50	3.90
7.00	3.90

Circuits	Dimensions(mm)			
	A	B	C	D
6	2*3	4.30	2.80	1.60
8	2*4	5.10	3.60	2.40
10	2*5	5.90	4.40	3.20
12	2*6	6.70	5.20	4.00
14	2*7	7.50	6.00	4.80
16	2*8	8.30	6.80	5.60
18	2*9	9.10	7.60	6.40
20	2*10	9.90	8.40	7.20
30	2*15	13.90	12.40	11.20
40	2*20	17.90	16.40	15.20
50	2*25	21.90	20.40	19.20



CSCONN

UNITS: mm
GENERAL TOLERANCE
 X. ° ±5° 0.X±0.3
 Y. ±2° 0.X±0.2
 Z. ±1° 0.XX±0.1
 XX. ±0.5°

PART NO. (INTENDED USE)
 CBT-0810XXF-XX

CHKD: Skila
DR: Kitty

TITLE: BTB 0.8MM XP FEMALE H=XXMM 单槽
DWG NO. BTB

APPD:	SCALE	SHEET	REV
	1:1	1 OF 1	A

CSCONN PRECISE ELECTRONICS CO.,LTD			
DWG NO. BTB			
SCALE 1:1			
SHEET 1 OF 1			
REV A			