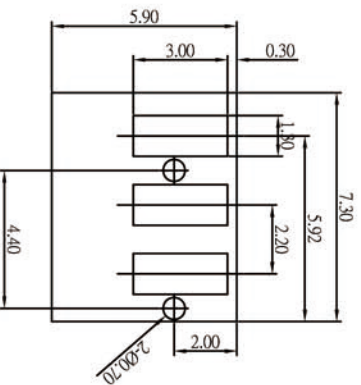
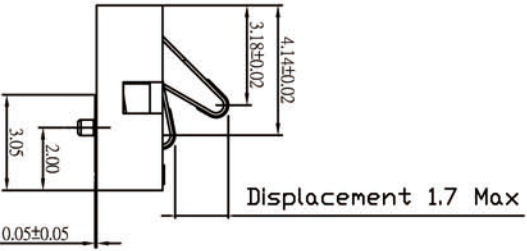
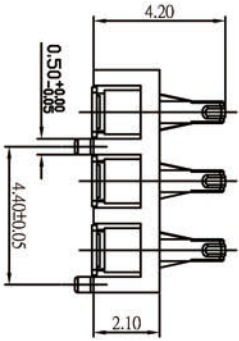
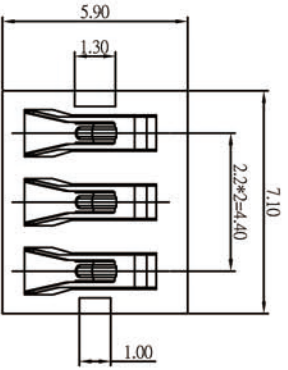
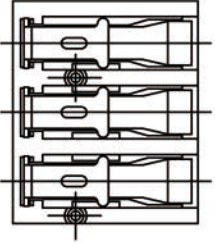


- NOTES
1. MATERIAL & FLASH/PLATED
 - 1.1 HOUSING: HIGH TEMP. THERMOPLASTIC+GLASS FIBRE
(JUL 94V-01) COLOR: BLACK
 - 1.2 TERMINAL: COPPER ALLOY
(PLATED) GOLD FLASH ON CONTACT AREA.
GOLD FLASH ALL OVER
BASE NICKEL, 50u"
1.3 COVER: HIGH TEMP. THERMOPLASTIC+GLASS FIBRE
(JUL 94V-01) COLOR: BLACK
 - 2.PACKAGE: TAPE/REEL



RECOMMENDED PC BOARD LAYOUT
TOLERANCE: ±0.05(TOP VIEW)



UNITS: mm		CSCONN		SHENZHEN CSCONN PRECISE ELECTRONICS CO.,LTD	
GENERAL TOLERANCE		PART NO.(INTENDED USE)		TITLE:	
X. ° ±5°	0. X±0.3	CBA-220371T-21		BATTERY 3P 2.2MM H=2.1MM	
X. 1±2°	0. XX±0.2	APPD:		DWG NO.	
XX. ±1°	0. XXX±0.1	CHKD: Skila		BATTERY	
XXX. ±0.5°		DR: Kitty		SCALE	
				1:1	
				SHEET	
				1 OF 1	
				REV	
				A	

X.	±0.20	X.	±2°
XX.	±0.10	XX.	±1°
XXX.	±0.05	XXX.	±0.5°